

Information bulletin

Equadiff 11

International Conference on Differential Equations
Czecho-Slovak series



Comenius University Bratislava
Faculty of Mathematics, Physics and Informatics

Bratislava, Slovakia
July 25 – 29, 2005

Contents

Introduction	2
Structure of the conference program	3
Time schedule of the conference	
Faculty of Math, Physics and Informatics - Orientation map	
Basic information	5
Conference office	
Registration	
Important phone numbers	
Local currency and exchange rates	
Weather	
Accommodation	6
Druzba hotel	
Social program information	7
Welcome and Farewell party	
Guided tours for participants and accompanying persons	
Technical information	9
Instructions for preparation of electronic presentations	
Access to internet services and computer facilities	
Public transportation	11
Bus and tram lines.	
How to get to Bratislava	
How to get to the conference place	
Sightseeing, Restaurants, Galleries, Museums, Shopping and other information	16

EQUADIFF 11
International conference on differential equations
Czecho-Slovak series

Comenius University
Bratislava, Slovakia, July 25 - 29, 2005

Scientific Committee

H.Brezis, P.Brunovsky, O.Dosly, F.Dumortier, R.Eymard, E.Feireisl, Y.Giga, J.Kacur, S.Luckhaus, H.Matano, P.Rabinowitz, A.Shishkov and P.Szmolyan.

Plenary speakers

H. Amann	E. Bansch	P. Drabek
C. Elliott	R. Herbin	J. Hulshof
A. Mahalov	J. Mallet-Paret	H. Matano
M. Mimura	P. Rabinowitz	M. Rumpf
L. Veron	G. Weiss	S. Yakovenko

Mini-symposia organizers

M.Benes, A.Chambolle, O.Dosly, F.Dumortier, R.Eymard, M.Feckan, E.Feireisl, T.Gallouet, Y.Giga, L. Giacomelli, A.Gladkov, M.Hieber, D.Hilhorst, J.Kacur, B.Kawohl, P.Krejci, T.Krisztin, S.Luckhaus, H.Matano, A. Novick-Cohen, P.Polacik, G.Raugel, P.Rabinowitz, B.Sandsted, K.Siebert, A.Shishkov, Ph.Souplet, P.Szmolyan

Scientific programme

There will be 50-minute plenary talks, 25-minute invited talks in mini-symposia. Every registered participant can deliver a 15-minute contributed talk.

Organizing committee

M. Fila (Chairman), P.Brunovsky, J.Filo, A.Handlovicova, K.Mikula, P.Quittner and D. Sevcovic

STRUCTURE OF THE CONFERENCE PROGRAMME

	9:00 – 12:15	12:30 – 13:30	14:30 – 16:45	17:00 – 18:35	19:00
Sunday July 24	Arrival, registration of participants at Druzba hotel				
Monday July 25	Plenary lectures	Lunch	Mini-symposia lectures	Contributed talks	Welcome party
Tuesday July 26	Plenary lectures	Lunch	Mini-symposia lectures	Contributed talks	
Wednesday July 27	Plenary lectures	Lunch	Free afternoon, guided tours		
Thursday July 28	Plenary lectures	Lunch	Mini-symposia lectures	Contributed talks	
Friday July 29	Plenary lectures	Lunch	Mini-symposia lectures	Contributed talks	Farewell party
Saturday July 30	Departure				

Faculty of Mathematics, Physics and Informatics Orientation map



BASIC INFORMATION

Conference office

The working hours of the Conference office will be 8:30 – 16:00. The conference office is located near the entrance hall (see the orientation map above).

Registration

On Sunday, July 24, you can register at the registration office located in the main entrance hall of the Družba dormitory from 14:00 to 22:00. On Monday, July 25, you can register from 8:00 till 9:00 at the conference office.

Important phone numbers

International telephone code of SR	+421
Local telephone code of Bratislava	+421-2
Information on telephone numbers	1181
Information on telephone numbers abroad	12 149
Emergency line	112
Police	158
Foreign police	0961 031 265
City police	159
Fast medical aid	16 155
Fire department	150
Assistance to drivers – recovery service	18 124

Local currency and exchange rates

The official currency in Slovakia is Slovak crown (SKK). You must have SKK when paying in restaurants, shops, taxi etc. The table below displays the exchange rates (May 2005) to other currencies.

CODE		Avrg. value	CODE		Avrg. value
AUD	1	23.518	HUF	100	15.480
CZK	1	1.297	NOK	1	4.800
DKK	1	5.228	PLN	1	9.316
EUR	1	38.903	SIT	100	16.243
JPY	100	28.727	CHF	1	25.198
CAD	1	24.553	SEK	1	4.266
LTL	1	11.268	USD	1	30.728
LVT	1	55.984	GBP	1	57.140

Actual exchange rates are on web site www.nbs.sk/INDEXA.HTM (National Bank of Slovakia).

Weather

Mild climate zone, temperatures in summer are approximately 30 °C.

Before trip is better to enter the web site www.meteo.sk and to follow local weather report.

ACCOMMODATION

Participants of the Equadiff 11 conference will be accommodated at the student dormitory Druzba in single rooms. The participant conference fee is Euro 370. It includes registration fee, accommodation at the student dormitory Druzba close to the conference site, six times breakfast, five times lunch and the welcome party fee.

Breakfast is served from 7.30 till 8:45

Lunch is served from 12:30 till 13.30

The check-in time is: 14:00, the check-out time is 10:00.

Address: Botanicka 25

Reception desk: tel. +421-2-65420065

SOCIAL PROGRAMME

A social programme will be organized for participants and accompanying persons. It includes the welcome party on Monday, the farewell party on Friday and two alternative guided tours on Wednesday afternoon. Two additional guided tours will be organized for accompanying persons on Tuesday and Friday. The payment for social programme activities should be made by the bank transfer to the Equadiff conference account or you can pay it during registration in cash.

Welcome and Farewell party

The welcome party will be organized on Monday, July 25 from 19.00 to 22:00 at Druzba hotel. The conference fee includes the payment for Welcome party.

The farewell party will be organized on Friday, July 29, from 19.00 to 24.00 at Druzba hotel. The entry fee for the farewell party is Euro 50.

Program A - Small Carpathian wine route

Wednesday afternoon.

Time schedule

14:00 – 15:00 transport to Driny cave

15:30 – 16:30 tour in the cave

16:30 – 17:00 transport to the Červený Kameň Castle

17:00 – 18:30 visit to this magnificent castle, one of the biggest in Slovakia,
with rich historical collections

18:30 – 20:00 dinner at the Červený Kameň Castle

20:00 – 21:00 wine tasting and show about the wine region and sorts of wine grown In
Malokarpatský wine region

21:15 transport to Bratislava

Total price per person = 60 EURO

Price includes:

- bus transport
- entrance fees to the castle and cave
- dinner at the castle
- wine taste
- assistance of the delegates from Limba travel agency

Program B - Medieval show at the Devin Castle

Wednesday afternoon.

Time schedule

14:00 – 15.30 boat trip to Devín Castle

15:45 – 17:00 guided tour around the castle

17:00 – 18:30 dinner

18:45- 20:15 welcome by the Lord of the Castle, old fight show, show of shooting, possibility of trying medieval weapons shooting by guests

20.30 – 21:00 bus transport to Bratislava

Total price / person = 55 EURO

Price includes:

- bus transport
- boat transport
- entrance fee to the Castle
- medieval show
- dinner
- assistance of the delegates from Limba travel agency

Accompanying persons' program C - Bratislava city tour and Danubiana gallery in Cunovo

Program for accompanying persons on Tuesday.

Time schedule:

10:00 – 11:30 guided sightseeing tour in Bratislava old town center with visit to the historical town museum situated in the Old City Hall and to the exposition of historical weapons in the Michal Tower

11:30 - 11:45 transport to the restaurant

11:45 – 13:15 lunch – goose feast

13:15 – 14:00 transport from the restaurant to the Danubiana gallery

14:00 – 15:30 tour in the gallery, park – typical nature along the Danube river (journey takes 20 minutes and tour takes 30 minutes)

15:30 – transport back to Bratislava

Total price per person = 45 EURO

Price includes:

- bus transport
- entrance fees to the museums and gallery
- lunch
- tour guides in Bratislava
- assistance of delegates from Limba travel agency

TECHNICAL INFORMATION

Instructions for preparation of electronic presentations

Electronic presentations will be displayed during plenary lectures and sessions using data-projectors. The electronic presentations must be loaded to computers present in session rooms. You might expect that these computers will be furnished with MS Windows operating system and there will be installations of MS Office 2000 (**PowerPoint**) and Adobe Acrobat Reader 6.0 (**Adobe PDF**). If you use newer versions of these tools, please, convert them to these beforehand.

Naming presentation files

In order to ease file manipulation and their proper distribution organizers would like to ask you to name your presentation according to the following format:

surname-firstname.pdf

Submission of electronic presentations

There are three possible ways how to deliver your presentation:

By e-mail during a week before the conference. Please, restrict yourself to files smaller than 5MB, in special cases 10MB. For larger files use other ways.

At registration desk on Sunday or at the conference office during conference (CD-ROM or memory stick media are preferred). Your presentation will be uploaded to the conference's presentation directory structure and, consequently, verified within minutes.

Just before a session (during lunch and coffee breaks) to the PC in the lecture room (CD-ROM, memory stick are preferred). Please DO NOT expect that the session computers are equipped with a DVD reader.

For the case of mishandling, network failure, etc., please, keep the copy of your electronic presentation to the session.

National character sets

Please, minimize the use of non western-European set of characters in presentations. Installed versions of Microsoft Office 2000 will have only limited multilanguage support. In cases when national character sets cannot be avoided, please use the pdf format. It is recommended to check beforehand whether Adobe Acrobat Reader displays them in a proper way.

Access to internet services and available computer facility

During the EQUADIFF conference our Faculty will provide access to one of its computer laboratories for all conference participants. The laboratory will be available from 10:00am to 5:00pm. All computers are connected to the internet, furnished with Windows XP OS, MS Office 2000, Acrobat Reader 6.0, Internet explorer, secure shell access tools (putty), telnet and ftp. It is possible to use memory sticks, cdroms and floppy disks. Participants will share the same account:

Login: **equadiff**
Password: **conference**

This account should not be used for excessive data files and for installation of any software unless agreed by a person in charge.

In this laboratory you will be able to reach the internet from your notebook on condition that it is equipped with standard twisted pair connector RJ-45 or similar. DHCP server will be present in the network.

Public transportation information

Below you can find the description of how to get to the conference site from the main travel points - airport, Bus and Railway stations, as well as some maps and plans of the faculty.



Equadiff conference takes place in a part of Bratislava called Karlova Ves. Both important places, the Faculty of Mathematics, Physics and Informatics and Hotel Druzba are close to each other.



TRANSPORT IN BRATISLAVA

City transport web page: www.imhd.sk

Prices of travel tickets :

14,- SKK (for a 10-minute ticket),
18,- SKK (for a 30-minute ticket),
22,- SKK (for a 60-minute ticket),
90,- SKK (for a 24-hour ticket),
210,- SKK (for a 3-days ticket),
90,- SKK (for a 7-days ticket).

You can buy your ticket on every stop using an automatic machine or in a newspaper kiosk.



Taxi

The most convenient way of getting to the Conference site/Hotel from the airport, Bus or Railway stations is to take a taxi to Karlova Ves

Approximate taxi prices to the conference site:

From Bratislava airport - cca 300 SKK

From Bus or Railway stations - cca 150 -200 SKK

It is cheaper to call a taxi from the phone/mobile than taking one right away on the street.

Taxi phone numbers:

ABC Taxi: 16 100

Euro Taxi: 16 022

Fun Taxi: 16 777

How to get to Bratislava from the Vienna airport

<http://english.viennaairport.com/>

From the Vienna Schwechat airport (see the plan below) take a bus directly to Bratislava Bus Station (Mlynske Nivy).

The bus departure schedule (http://www.eurolines.sk/cpz_uk/cpzdata_uk.asp?linka=102806&smer=1) :

Bratislava – Wien, Valid from 1.4.2005 to 31.3.2006.

Carrier : SAD Bratislava, a.s., Rožňavská 2, phone no.0900/211222, 0972/222222, 02/55571312

Km	Km	Tè	Stops		2	4	6	8	10	12	14	16	18	20	22	24	26	28	30
	0	11	Bratislava,AS	dep	...	(1)(2)	17:30
0	10	10	Bratislava,letisko	v	4:45	(3)(4)	6:35	7:35	10:35	...	12:35	13:35	14:35	...	17:45	...	20:35
				arr	5:00	(5)(6)	6:50	7:50	10:50	...	12:50	13:50	14:50	...	<	...	20:50
10	<	9	Bratislava,AS
				dep	5:10	5:40	7:00	8:00	9:00	10:00	11:00	12:00	13:00	14:00	15:00	16:00	<	19:30	21:00
20	18	8	Bratislava,Petržalka		5:15	5:45	7:05	8:05	9:05	10:05	11:05	12:05	13:05	14:05	15:05	16:05	17:50	19:35	21:05
22	20	7	Bratislava,Petržalka,št.hr. CLO		5:20	5:50	7:10	8:10	9:10	10:10	11:10	12:10	13:10	14:10	15:10	16:10	17:55	19:40	21:10
22	20	6	Berg,ÖZA ZOLL		5:40	6:10	7:30	8:30	9:30	10:30	11:30	12:30	13:30	14:30	15:30	16:30	18:15	20:00	21:30
27	25	5	Wolfsthal,Gh.Dom			6:15	7:35	8:35	9:35		11:35		13:35	14:35	15:35	16:35		20:05	21:35
32	30	4	Hainburg a.D.,Ungarntor																
32	30	3	Hainburg a.D.,Hauptplatz			6:20	7:40	8:40	9:40		11:40		13:40	14:40	15:40	16:40		20:10	21:40
77	75	2	Wien,Flughafen Wien	v	6:15	6:50	8:10	9:10	10:10	11:05	12:10	13:05	14:10	15:10	16:10	17:10	18:50	20:40	22:10
85	83	1	Wien,Südtirolerplatz Bbf.	arr	6:40	7:15	8:35	9:35	10:35	11:30	12:35	13:30	14:35	15:35	16:35	17:35	19:15	21:05	22:35

Km	Km	Tè	Stops		1	3	5	7	9	11	13	15	17	19	21	23	25	27	29
0	0	1	Wien,Südtirolerplatz Bbf.	dep	8:00	9:00	10:10	11:00	12:00	13:00	14:00	15:00	16:00	17:00	18:00	19:10	20:00	21:30	23:00
8	8	2	Wien,Flughafen Wien		8:25	9:25	10:35	11:25	12:25	13:25	14:25	15:25	16:25	17:25	18:25	19:35	20:25	21:55	23:25
53	53	3	Hainburg a.D.,Hauptplatz																
53	53	4	Hainburg a.D.,Ungarntor		8:55		11:05	11:55	12:55	13:55	14:55	15:55		17:55	18:55	20:05	20:55	22:25	23:50
58	58	5	Wolfsthal,Gh.Dom		9:00		11:10	12:00	13:00	14:00	15:00	16:00		18:00	19:00	20:10	21:00	22:30	23:55
63	63	6	Berg,ÖZA ZOLL		9:05	10:00	11:15	12:05	13:05	14:05	15:05	16:05	17:00	18:05	19:05	20:15	21:05	22:35	24:00
63	63	7	Bratislava,Petržalka,št.hr. CLO		9:20	10:15	11:30	12:20	13:20	14:20	15:20	16:20	17:15	18:20	19:20	20:30	21:20	22:50	0:15
65	65	8	Bratislava,Petržalka	v	9:25	10:20	11:35	12:25	13:25	14:25	15:25	16:25	17:20	18:25	19:25	20:35	21:25	22:55	0:20
				arr	9:30	<	11:40	12:30	13:30	14:30	15:30	16:30	<	18:30	19:30	20:40	21:30	23:00	0:25
<	75	9	Bratislava,AS
				dep	9:35	<	11:45	12:35	13:35	14:35	<	18:35	19:35	20:45	0:30
73	85	10	Bratislava,letisko	v	9:50	10:25	12:00	12:50	13:50	14:50	17:25	18:50	19:50	21:00	0:45
83		11	Bratislava,AS	arr	...	10:40	17:40

((1) runs on Monday (2) runs on Tuesday (3) runs on Wednesday (4) runs on Thursday (5) runs on Friday (6) runs on Saturdays The carrier reserves the right to change the timetable during the state holidays.

Orientation at Vienna airport:

The bus stops are right in front of the arrival lobby of the airport. After leaving the airport building, find the ticket office on your right (take a ticket with reservation) or buy your ticket to Bratislava Bus Station (Mlynske Nivy) directly in the bus.



How to get to the faculty of Mathematics, Physics and Informatics

The name of the the faculty is (in Slovak) Fakulta Matematiky, Fyziky a Informatiky in Karlova Ves. The most convenient way is to take a taxi (the price is about 200-300 SKK). Otherwise you can use a public transportation means and go by tram or by bus to the "Botanicka zahrada" stop. Do not forget to buy a ticket and validate it using a red machine in the bus or tram. Prices of travel tickets are as follows: 14,- SKK (for a 10-minute ticket), 18,- SKK (for a 30-minutes ticket), 22,- SKK (for a 60-minutes ticket), 90,- SKK (for a 24-hour ticket). It is also possible to buy a 3 days (210,- SKK) and 7 days (310,- SKK) ticket.



The tram stop Botanicka zahrada

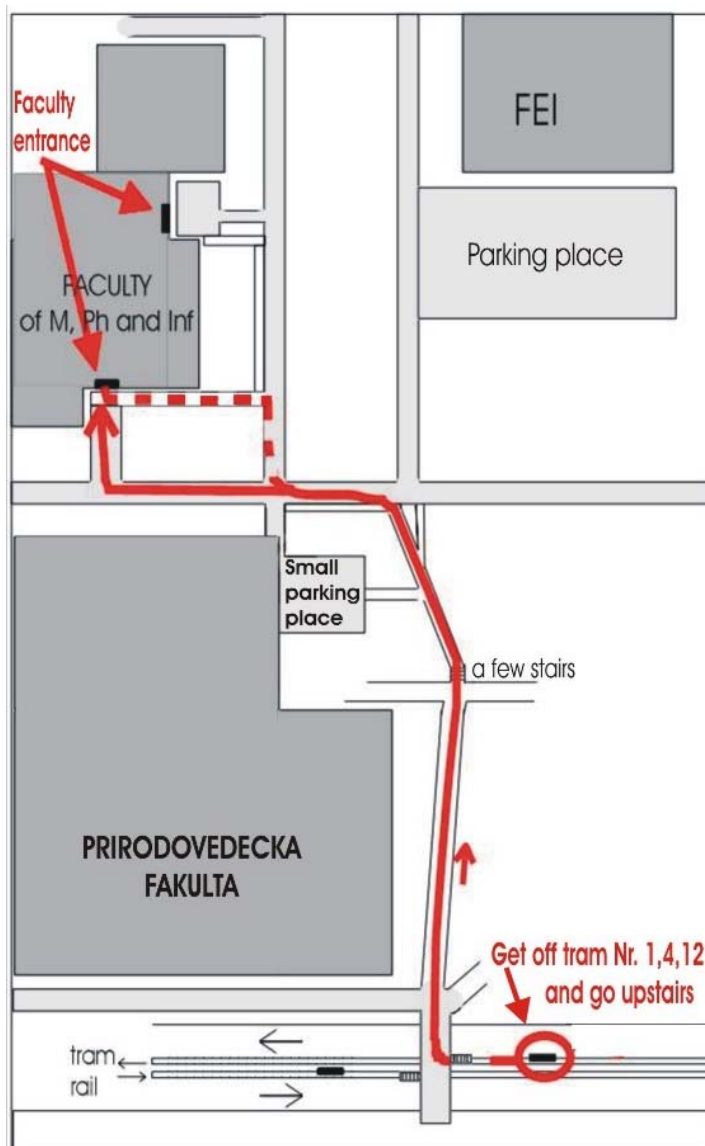
From Airport Bratislava

Take the bus number 61, and get to " Trnavske Myto" bus stop. Go downstairs taking an underpass, and than upstairs to a tram stop with the direction to Centrum. Take tram number 4 or 9 and get off at "Botanicka zahrada" stop (about 20 minutes). Go upstairs, turn right and follow the path up.

Pass "Prirodovedecka Fakulta" (Faculty of natural sciences) building on your left side. Our faculty is about 100-200 m further. See map 1 on the right.

From Railway Station "Hlavna stanica" Bratislava

Take bus number 32, get off at the stop "Botanicka zahrada", go upstairs, turn right and follow the path up passing "Prirodovedecka Fakulta", as it is listed above. Otherwise take tram number 1 (from underground of the railway station) and get off at the tram stop "Botanicka zahrada" (about 20 minutes). Go upstairs, turn right and follow the path up passing "Prirodovedecka Fakulta", as it is listed above.



Map 1

From Bus Station "Mlynske Nivy"

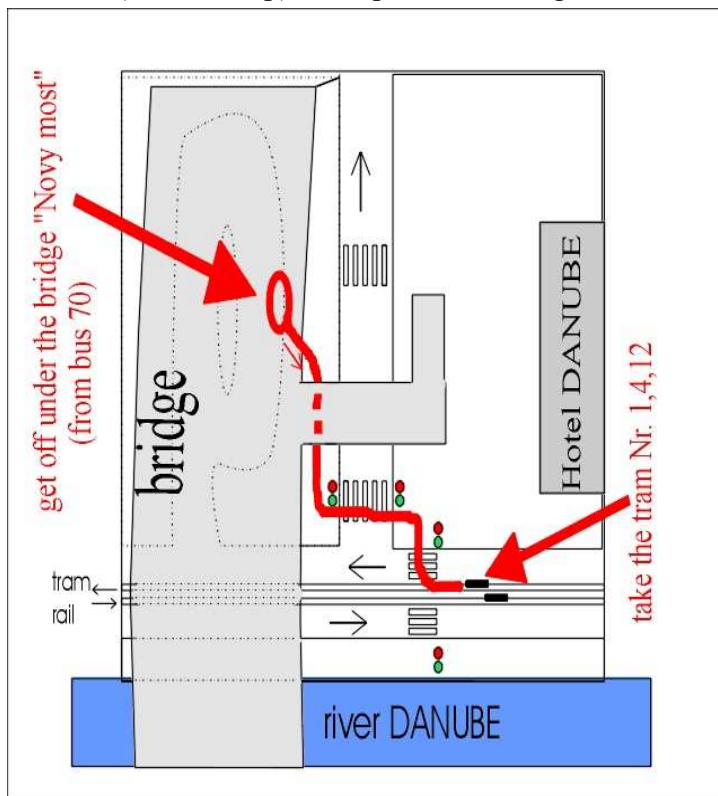
Take bus number 70 and get off at the bus stop "Novy most". Then cross the street next to Danube, (see map 2 on the right), get to the tram stop and take tram number 1, 4, 5, 9, or 12. Get off at the tram stop "Botanicka zahrada" (the 4th stop). Go upstairs, turn right and follow the path up.

Pass "Prirodovedecka Fakulta" (Faculty of natural sciences) building on your left side in the same way as it is listed above. See map 1 above.

Another possibility to get from "Novy most" to "Botanicka zahrada" is to use bus Nr. 29 directly from the stop "Novy most".

from Railway Station "Petrzalka"

Take bus number 90, get off at the end stop - "Novy most". Then cross the street next to the river Danube, (see map 2 above), get to the tram stop and take tram number 1, 4 or 12. Get off at the tram stop "Botanicka zahrada" (the 4th stop). Then follow instructions above and map 1. Another possibility to get from "Novy most" to "Botanicka zahrada" is to use bus Nr. 29 directly from the stop "Novy most".



Map 2

From the tram or bus stop Botanicka zahrada to the Hotel Druzba



Hotel Druzba

Getting off at the bus/tram stop "Botanicka zahrada" from the city centre or Bus and Railway Station, Hotel Druzba is on your left. Cross the street using an overpass and walk about 50 m.

Hotel Druzba (on the left picture) is very close to the conference site - faculty, situated in Karlova Ves. From Hotel to the faculty you can simply get by crossing the street, using an overpass and following the path around Prirodovedecka Fakulta, see map 1.



Map of the Karlova Ves

From the conference site to the old town



From the faculty, or hotel Družba, get to the old town taking a tram from the tram stop "Botanická zahrada". Take tram number 1, 4, 5, 9, 12. Get off at the stop "Nový most". You can walk to the old centre from this stop.



Map of the public transportation to the old town, tram (red) and bus (blue) lines



SIGHTSEEING

[1] *St. Martin's Cathedral* = *Dóm sv. Martina*, Staromestská, **c2**
(The gothic church built in 14th century, where used to be crowned Hungarian kings and queens. Nowadays there can be seen the statue of Saint Martin sitting on horse cutting his overcoat to share it with the poor man and also the highest church tower (85 m).)

[1]

[2] *The Primate's Palace* = *Primaciálny palác*, Primaciálne námestie 1, **b3**
(The classicist palace was built during 1778-1781 for Archbishop Jozef Bathany. At present, it is a seat of the mayor of the town and you can see there iron cardinal hat of diameter 180 cm and weight 150 kg.)



[2]

[3] *The Zichy Palace* = *Zichyho palác*, Ventúrska 9, **b2**
(There is tearoom and gallery Z - open Mon-Sat: 12:00 – 18:00.)

[4] *The Grassalkovich Palace* = *Grassalkovičov palác*, Hodžovo námestie
(It was built as a summer palace in 1760 and now it is a seat of the President of the Slovak Republic. The rococo interiors and St. Barbora's chapel are open once a year, but the garden behind the palace is open to the public daily 8:00 – 22:00.)



[4]

[5] *Old Market Hall* = *Stará tržnica*, Klobučnícka, **a3**

(The metal construction is typical for constructions from time of the industrial revolution (1910).)

[6] *Slavin* = *Slavín*, (Memorial and cemetery of soldiers of the Soviet Army, the terrace of the memorial has a beautiful view of the town.)



[6]

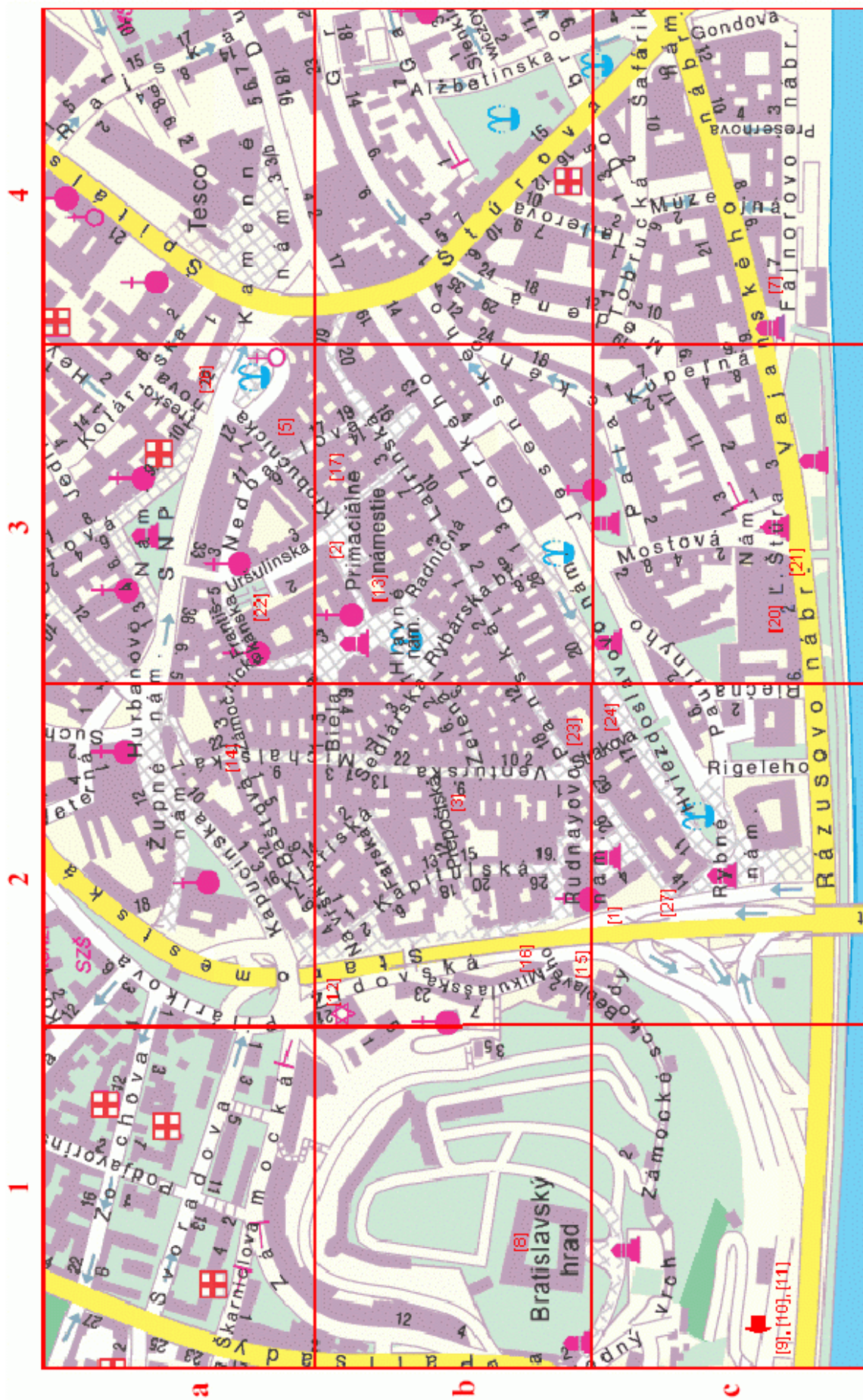
Basic information about Bratislava can be found here:

Town council of Capital City of the Slovak Republic Bratislava = *Magistrát hlavného mesta SR Bratislava*, www.bratislava.sk address: Primaciálne nám. 1, see in map - **b3**

Bratislava Culture and Information Centre = *Bratislavské kultúrne a informačné stredisko (BKIS)*, www.bkis.sk Nábr. arm. g. L. Svobodu

Information Center BKIS = *Informačné centrum BKIS*, Klobučnícka 2, see in map - **b3**

Information Center BKIS = *Informačné centrum BKIS*, Hlavná železničná stanica



M 1 : 70 000

MUSEUMS

Slovak National Museum = Slovenské národné múzeum (SNM) www.snm.sk

[7] *Natural Science Museum = Prírodovedné múzeum*, Vajanského nábrežie 2, **c4**
Tu – Sun: 9:00 – 18:00



[7]

[8] *Museum of History – Bratislava Castle = Historické múzeum Hrad*, Hradný vrch, **b1** (It is a dominant of the city. The first reference was written in annals of Salzburg of 907. Now it is served for representation purposes of Slovak National Council and there are expositions of Jewels of ancient past too.) Tu – Sun: 9:00 – 17:00



[8]

[9] *Archeological Museum = Archelogické múzeum*, Žižkova 12,
Tu – Sun: 9:00 – 17:00



[9]

[10] *Museum of Carpathian German Culture = Múzeum kultúry karpatských Nemcov*, Žižkova 14, Tu – Sun: 10:00 – 16:00

[11] *Museum of Hungarian Culture in Slovakia = Múzeum kultúry Maďarov na Slovensku*, Žižkova 18, Tu – Sun: 10:00 – 17:00

[12] *Museum of Jewish Culture = Múzeum židovskej kultúry*, www.chatamsofer.com, Židovská 17, **b2**, Sun - Fri: 11:00 – 17:00

City Museum = Mestské múzeum v Bratislave www.muzeumbratislava.sk

[13] *Museum of Town's History and Feudal Justice – The Old Town Hall = Expozícia dejín mesta a feudálnej justície – Stará radnica*, Primaciálne námestie 3, **b3**
Tu – Fri: 10:00 – 17:00, Sat – Sun: 11:00 – 18:00



[14]

[14] *Museum of Arms and City Fortification – Michael's Tower = Expozícia zbraní a stredovekého opevnenia – Michalská veža*, Michalská 24, **a2**
(A very nice view of the old city is provided from the tower.) Tu – Sun: 9:30 – 16:30

[15] *Museum of Arts and Crafts = Expozícia umeleckých remesiel*, Beblavého 1, **b2**
Tu – Sun: 9:30 – 16:30



[16]

[16] *Museum of Historic Clocks – House "At the Good Shepherd" = Expozícia historických hodín - Dom u dobrého pastiera*, Židovská 1, **b2**
(Burgher rococo house of the 18th century.) Tu – Sun: 9:30 – 16:30

[17] *Music museum – House of Birth of the Composer J. N. Hummel = Hudobná expozícia – rodný dom J. N. Hummela*, Klobočnicka 2, **b3**
(classic – jazz - world music) Mon – Fri: 10:00 – 18:00, Sat: 10:00 – 14:00

[18] *National Cultural Monument – Devin Castle = Národná kultúrna pamiatka – Hrad Devín*, Devín, Muránska. (The oldest traces of settlement date back to 5000 BC. In the 1st century BC, the territory was populated with Celts, later at the times of the Roman Empire, Devin was an important military station and, at the times of the Greater Moravian Empire, the castle was one of political and administration centers.) Tu – Fri: 10:00 – 17:00, Sat – Sun: 10:00 – 18:00



[18]

[19] *Museum of Transport = Múzeum dopravy STM www.muzeumdopravy.com*, Šancová 1/a, Tu – Fri: 10:00 – 16:00, Sat – Sun: 10:00 – 17:00



[19]

GALLERIES

Slovak National Gallery = Slovenská národná galéria www.sng.sk

Tu – Sun: 10:00 – 18:00

[20] *Water Barracks = Vodné kasárne*, Rázusovo nábrežie 2, **c3**

(There can be found some of sculptor Franz Xaver Messerschmidt's busts representing human natures, their grimaces and moods.)

[21] *Esterházy Palace = Esterházyho palác*, Námestie Ľudovíta Štúra, **c3**

(It was built in 1740 as one of town palaces of the nobility from the period when Bratislava was a capital and coronation town. At the present, there is an exhibition of Italian art.)



[20]

[22]

Gallery of the city of Bratislava = Galéria mesta Bratislavy www.gmb.sk

Tu – Sun: 11:00 – 18:00

[22] *The Mirbach Palace = Mirbachov palác*, Františkánske námestie 11, **a3**

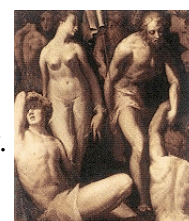
(A rococo palace that was built within 1768-1770. Its last owner Emil Mirbach donated the palace to the town, provided that it should establish a gallery in it.

At present, there are exhibition of Central European Baroque Painting and Sculpture and Rococo Prints and its halls are also used for temporary exhibitions.)

[23] *The Pálffy Palace = Pálffyho palác*, Panská 19, **b2**

(It was built in the middle of the 19th century, but during the last reconstruction, archaeologists uncovered foundations of a Roman house from the early 13th century.

At present, there are collections – Gothic painting on glass, pictures of Dutch and Flemish masters of the 17th and 18th centuries, works of Italian masters of the 17th and 19th centuries. Part of the premises is devoted to occasional exhibitions.)



[23]

[24] *Medium Gallery = Galéria Medium www.vsvu.sk*, Hviezdoslavovo námestie, **c2**

Tu – Sun: 10:00 – 17:00, Thu: 12:00 – 19:00

[25] *Gallery – Danubiana, Galéria Danubiana www.danubiana.info*,

Vodné dielo Čunovo, Tu – Sun: 10:00 – 20:00

[26] *House of Art = Dom umenia*, Námestie SNP 12, **a3**

[27] *BIBIANA, International House of Art for Children = BIBIANA*,

medzinárodný dom umenia pre deti, Panská 41, Tu – Sun: 10:00 – 18:00, **c2**



[25]

[28] ZOO = *Zoologická záhrada*, Mlynská dolina 1

Mon – Sun: 9:00 – 18:00

[29] BOTANIC GARDENS = *Botanická záhrada UK*, Botanická 3

Mon – Sun: 9:00 – 18:00



WINING AND DINING

Restaurants

<i>Slovak</i>	<i>Apetít</i> , Dunajská 18 <i>Prašná bašta</i> , Zámočnícka 11, a2 <i>1st Slovak Pub</i> , Obchodná 62 <i>Slovenská reštaurácia</i> , Hviezdoslavovo nám. 20, c2 <i>Trafená hus</i> , Šafárikovo nám. 7 <i>Traja mušketieri</i> , Sládkovičova 7
<i>Chinese</i>	<i>Bambusová záhrada</i> , Františkánske námestie 3, a2 <i>Jazmín</i> , Židovská 7 <i>Palatín</i> , Laurinská 3, b3
<i>French</i>	<i>Francúzska reštaurácia</i> , Hotel Devín – Riečna 4 <i>Le Monde</i> , Ventúrska 1, b2
<i>Indian</i>	<i>Krishna</i> , Bulharská 60 <i>Maharadža</i> , Bartókova 6
<i>Italian</i>	<i>Alvarez</i> , Bajkalská 24 <i>Paparazzi Ristorante</i> , Laurinská 1, b3
<i>Japanese</i>	<i>Kikaku Sushi Bar</i> , Gorkého 6, b3 <i>Tokyo Sushi Bar</i> , Panenská 27
<i>Jewish</i>	<i>Chez David</i> , Zámocká 13, a1
<i>Mexican</i>	<i>Corrida de torros</i> , Laurinská 7, b3
<i>Vegetarian</i>	<i>Hysteria Pub and Food</i> , Govinda, Obchodná 30 <i>Hysteria Pub and Food</i> , Odbojárov 9

Cafes

4 Izby Café Bar, Heydukova 19, **a3**
Aero espresso, Ventúrska 6, **b2**
Caffè Divan, Panská 9, **b2-b3**
Cafe Vienna, Námestie SNP 15, **a3**
ISTER, Ventúrska 8, **b2**
Jaklitsch Caffè, Michalská 5, **a2**
Pohodka-fe, Klariská 12, **a2-b2**
Prezidentka-fe, Štefánikova 19
U Garpa, Námestie SNP 25, **a3**

Tearooms

Čajovňa, Zámocká 18, **a1**
Čajovňa v podzemí, Ventúrska 9, **b2**

Wine restaurants

Bakchus, Hlboká 5
Chillon Wine Club, Panská 27, **b2**
Kláštorná vináreň, Františkánska 2, **a3**
U svätého Urbana, Obchodná 53
Veľkí Františkáni, Františkánske
námestie 10, **a3**

SHOPPING

SHOPPING CENTRES

Avion shopping park, Ivánska cesta 12
Aupark – Bratislava shopping centre, Einsteinova
Polus city center, Vajnorská 100

SOUVENIRS MADE IN SLOVAKIA

Information Center BKIS = Informačné centrum BKIS, Klobočnícka 2, **b3**
Bratislava Shop, Námestie SNP 13, **a3**, <http://www.basuvenirshop.info>
Úľuv, Michalská 4, **a2-b2**, <http://www.uluv.sk>
Úľuv, Námestie SNP 12, **a3**
Úľuv, Obchodná 64
Folk Folk, Obchodná 10